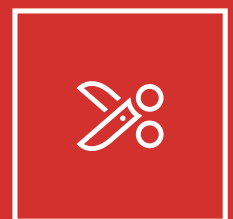


6700



VARIABLE HIGH-PERFORMANCE CUTTING SYSTEM



MÜLLER 6700

VARIABLE HIGH-PERFORMANCE CUTTING SYSTEM

The Müller 6700 web cutting system fulfills all requirements for transaction applications and the graphic market. Easy and flexible to use, it is one of the leading systems in the industry. With all its features it is the optimal system for complex applications. The Müller 6700 utilizes the printing and paper width of 22" inkjet printing systems 100 percent. Variable paper lengths are possible at any time, even within a job. This makes the web cutting system the best choice – even for book-of-one applications. With a 1-up to 4-up offset stack (with and without a cut-out), it gets the maximum out of each paper web.

As a stand-alone or as a complete online solution integrated into a digital printing line with the Müller web buffer – the Müller 6700 can be used flexibly. And thanks to the new non-stop stacker, even small stacks can be processed online.

The variable high-performance cutting system is upgradable in all directions. Camera job control, dynamic perforation or file hole punching are common options.

150-Meter-Class • horizontal and vertical trim at full speed

White-Paper-Management • blank web (macule) will be diverted without stop

Processing-Flexibility • pinless or pinfeed, 1-up to 4-up

Process-Control • document monitoring and camera job control

Ease-of-Use • integrated Müller product concept with intuitive touch screen operation

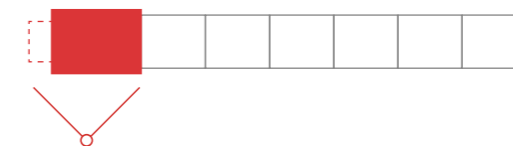


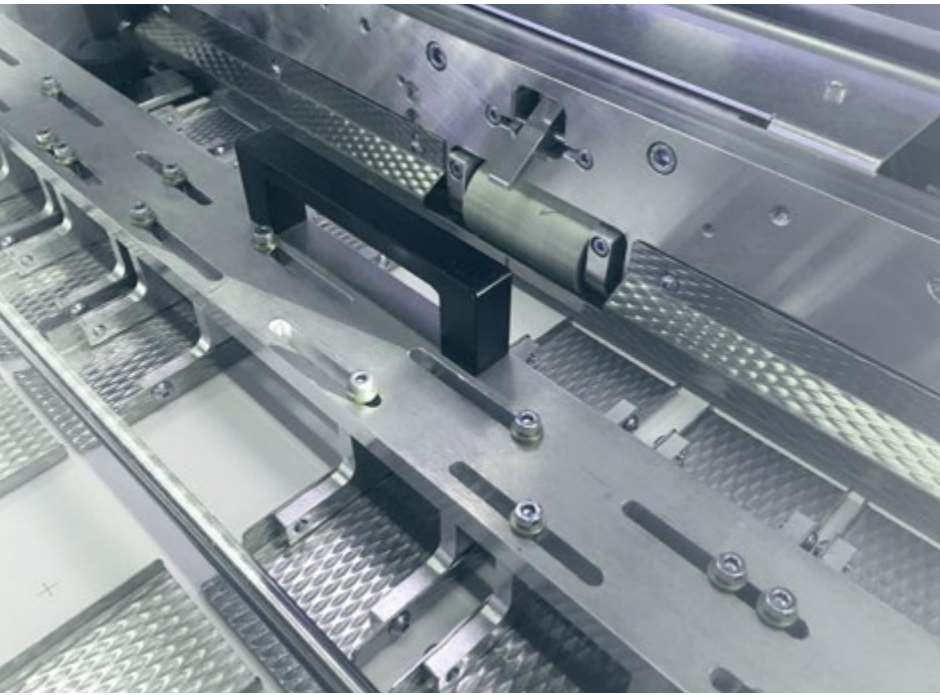


UNWINDER

Simple handling through full automated, large web buffer and intuitive operation: The unwinder processes paper rolls up to a width of 560 mm and is up to 240 m / min. fast. The automatic clutch for the paper roll shaft speeds up the paper reloading process. Different sized web buffers can be chosen for special applications. Operation is possible with or without paper tension.

WEB WIDTH 560 MM (22")
LARGE WEB BUFFER
WEB TENSION VARIABLE





Highly stable paper path, running up to 60,000 documents in A4 per hour. Multi gains up to 4-up can be processed at a web width of 560 mm. Gross formats will be cropped 4-sided to the net format. The cutter works at the horizontal (slit and gutter cut) and vertical cuts at full speed. Waste sheets will divert by the white-paper-management. The use of highly durable knives allows long maintenance intervals.

- WEB WIDTH 560 MM (22")
- 60.000 DOCUMENTS/H (150M / MIN)
- WHITE-PAPER-MANAGEMENT
- SINGLE AND DOUBLE CUT
- CAMERA CONTROLLED OPERATION



WEB CUTTER

ALIGNER



GROUP SEPARATOR

PAGE 10

PAGE 11

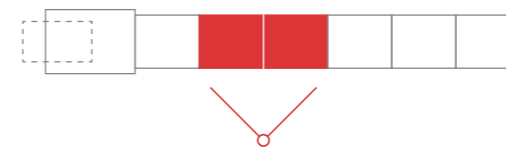
The cut to final format documents are isolated horizontally and aligned vertically. Thus, 2-up to 4-up applications can be processed without longitudinal cut-outs. The productivity can be increased by over 30 percent especially with books or the American Invoice 5 ½ format, that are not printed full bleed.

1-UP TO 4-UP
ALIGNMENT WITHOUT LONGITUDINAL CUT-OUT
MAXIMUM UTILIZATION OF THE SHEET



The separated and aligned documents are offset by 11 millimetres by means of the innovative 2-level gateway system. This is either triggered by present counter or by code control.

INNOVATIVE PROCESS
CODE CONTROLLED OR PRESET COUNTER
2-LEVEL POSITING SYSTEM



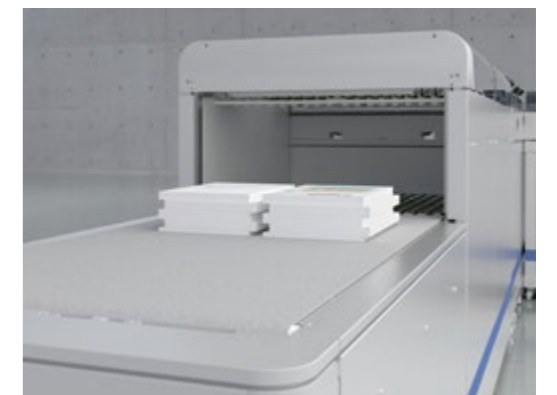
STACKER DELIVERY BELT



PAGE 12

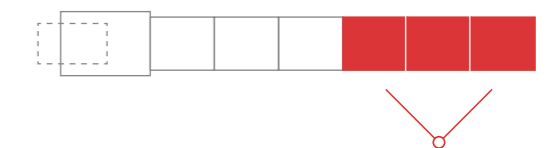


PAGE 13



The grouped documents are accelerated and placed on the stacker separated into groups. The stacks can be deposited on the delivery belt without getting caught up in one another. It is therefore easy for the operator to remove the stacks. When the end of the stack is reached, the stacks are passed onto the next delivery belt. Through an integrated clipboard the system works also while stack exchange without interruption. The height of the stack is around 2,000 sheets at 80 g/m².

NON-STOP OPERATION WHILE STACK EXCHANGE
STACKING WITHOUT SNAGGING
HIGHEST PRODUCTION SAFETY





OPTION

WEB BUFFER FOR ONLINE CONNECTION

WP3000

When directly connected to an inkjet digital printing system, the web buffer stores 20 meters of the paper web. The buffer can be operated with and without paper tension.

INCLUDING VACUUMBOX
EASY HANDLING
LOW MAINTENANCE



The paper web can be processed up to 150 m / min code-controlled before cutting. Horizontal and vertical perforation patterns, for example, for payment cards and coupons, filing holes or a pin strip edge strip can be applied.

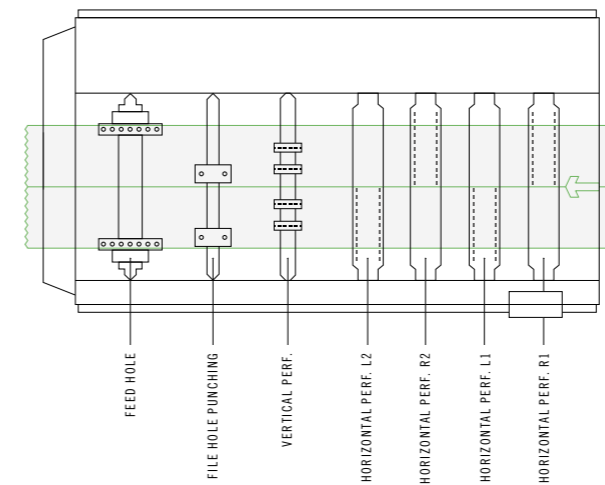
PROCESSING UP TO 150 M / MIN
MULTIFUNCTIONAL TOOLS
PAPER WEB WIDTH UP TO 560 MM (22")

OPTION

DYNAMIC PERFORATOR

DP3000

The dynamic perforator Müller DP3000 is used for the printing of blank bank transfer forms, coupons, gift certificates, detachable pages, and much more. The perforator produces dynamic horizontal or vertical perforations as well as for filing holes, depending on the requirements based on the information read by the machine. This results in the greatest possible flexibility not only for user friendly documents, but also for the production of white-paper-solutions. Efficiency, operator convenience, and flexibility are essential characteristics of the machine.



DYNAMIC PERFORATION

horizontal perf. 2-up: up to 2 double perforation knives

horizontal perf. 1-up: up to 4 double perforation knives

vertical perf.: up to 4 knives

DYNAMIC FILE HOLE PUNCHING

supports 2- to 4-fold file hole punching

for 1-up and 2-up

TRACTOR FEED HOLES (REMAILINER)

Left and right along the paper web margins

Centric placement optional for 2 x 1-up

The perforation patterns are fully dynamic so that each sheet can be perforated individually and with different patterns. It is possible to place horizontal perforations individually.

Vertical perforations (in running direction) can be placed fully dynamically in both models and independent of horizontal perforations. The Müller sync system punches the tractor feed holes after the printing process. Thus it is ensured that no paper jams, or 'chads' caused by one, reach the printer.

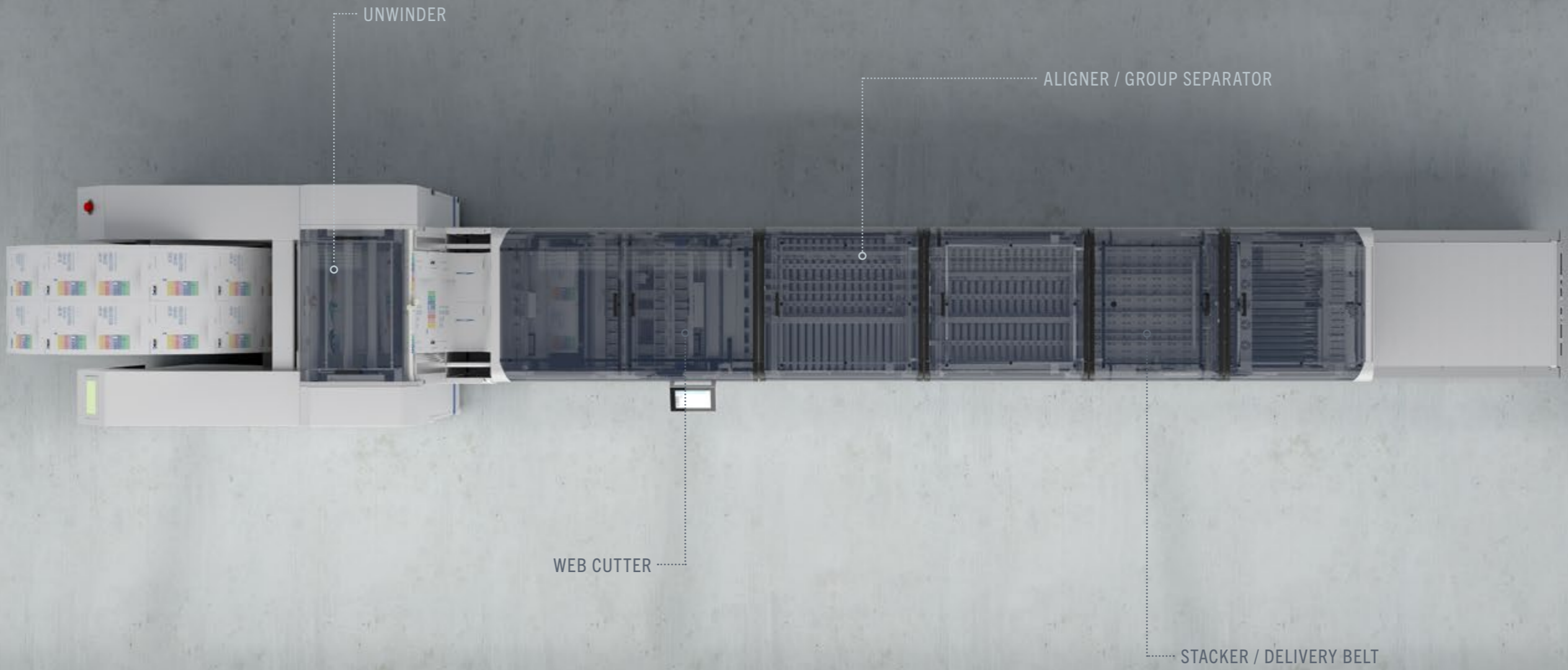


OPTION

WASTE EXTRACTOR

Mobile waste extraction with a large container picks up the trim and cut-outs. When the container is full, Müller 6700 stops automatically. Once the container has been emptied or replaced, the Müller 6700 starts up again automatically.

LARGE CONTAINER
AUTOMATIC STOP AND START
MOBILE



TECHNICAL DATA

| | |
|-------------|--|
| PERFORMANCE | 60,000 DOCUMENTS/H (150 M) |
| | PINLESS OR PINFEED |
| PAPER | 40 (60) – 200 (250) G/M ² |
| | 75 – 560 MM (3 – 22") PAPER WIDTH* |
| | 100 – 500 MM (4 – 20") PAPER LENGTH* |
| | 100 – 710 MM (4 – 28") WITH B2-STACKER, PAPER LENGTH |
| USAGE | 1-UP TO 4-UP |
| | WHITE-PAPER-MANAGEMENT (E.G. FOR INKJET PRINTERS) |
| | PARALLEL PRINT |
| CUTTER | HORIZONTAL SLIT- AND GUTTER-CUT AT FULL SPEED |
| | VERTICAL SLIT- AND GUTTER-CUT (LEFT, RIGHT, WITHIN THE DOCUMENT) |
| STACKER | STACK UP TO 2,000 SHEETS (80 G/M ²) |
| | GROUP SEPARATION VIA READING OR COUNTER |
| INTERFACE | TOUCH-SCREEN-OPERATION |
| | DOCUMENT-MONITORING |
| | INTERFACE FOR PRODUCTION MANAGEMENT SYSTEMS (PMS) |
| OPTIONS | WEB BUFFER 20 METERS FOR ONLINE CONNECTION |
| | DYNAMIC PERFORATOR |
| | TRANSPORT PAPER STACK TO THE NEXT MODULE |

* Special dimensions are available on request



MÜLLER

FLEXIBLE PAPER MANAGEMENT SOLUTIONS

Müller stands for extremely flexible paper management solutions for the automated processing of digital print products. From cutting, folding and inserting through to the verification of documents and the affixing of plastic cards: Systems from Müller feature the latest technology and a high level of reliability for a wide range of different requirements from transaction printing through to graphic arts applications.

Müller works according to a unique principle: paper management systems are configured from more than 100 combinable modules to meet individual customer requirements. The modules cannot only be combined with one another but can also be integrated into existing systems. Whenever there is a new customer application to be realised, the modules can be quickly and easily combined to form a new configuration. The Müller module concept also automates applications that could previously only be processed manually.

From the mechanics and electronics through to the software, Müller produces almost every component itself to the highest German quality standard. This not only speeds up the development of the systems while guaranteeing the long-term availability of spare parts but also allows customer-specific adaptations to be carried out at any time.

Müller.
Flexible. Intelligent. Efficient.



Müller Apparatebau GmbH
Gewerbepark 19
85402 Kranzberg
Germany

+49 8166 670 -0
info@mueller-phs.com
www.mueller-phs.com